



We Tame Photons to Work for You!



Products > High Power LEDs > TitanBrite LED



Features / Options

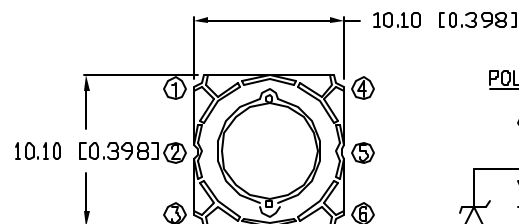
- ▶ State-of-the-Art, High Brightness Chip Technology
- ▶ Choice of Colors and Lens Finishes
- ▶ Easy-to-Solder Leads, Tin Finish
- ▶ SMT package eliminates thru-hole soldering
- ▶ Very Long Operational Life

Applications / Uses

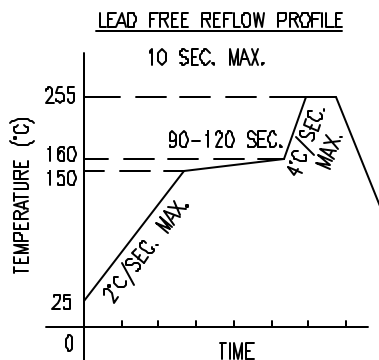
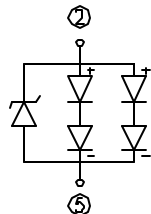
- ▶ LCD Backlighting
- ▶ Illuminating Signs/Artwork
- ▶ Decorative Lighting
- ▶ Warning and Alarm Lights

Part Number:	Brightness	Dice Material	Emitted Color	Peak Wavelength	Epoxy Lens	Operating Typ Vf (V)	Intensity Typ, mcd @ 20 mA	View Angle 2x Theta		
SML-LX3939UWC-TR	High	InGaN	White	-	Clear	6.6	190 lm	130	n/a	—

PRELIMINARY IN P/N DIR

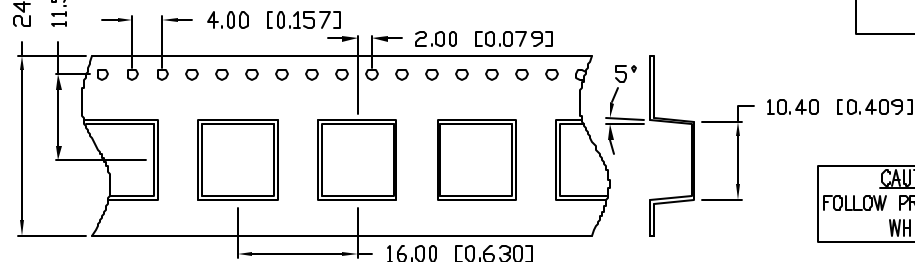
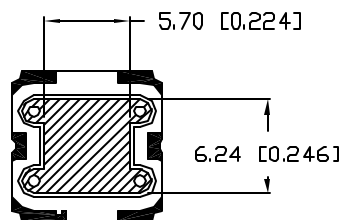
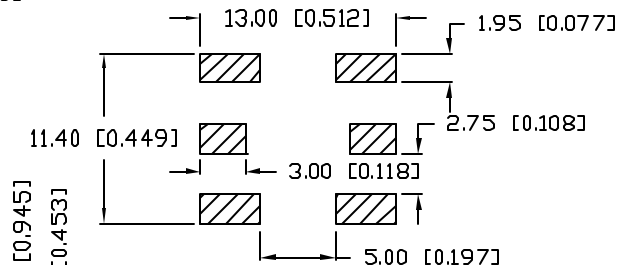
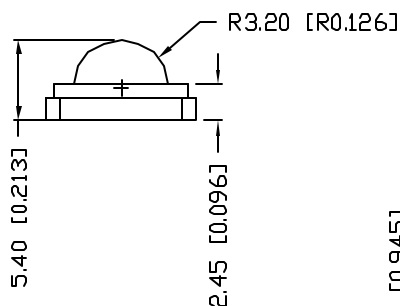


POLARITY:



TOTAL TIME ABOVE 220°C IS 60 SECONDS MAX.

PAD LAYOUT:



ELECTRO-OPTICAL CHARACTERISTICS TA=25°C

PARAMETER	SYMBOL	MIN	TYP	MAX	UNITS	TEST COND
PEAK WAVELENGTH					nm	
FORWARD VOLTAGE	V _f	6.6		8.0	V	I _f =350mA
REVERSE VOLTAGE	V _r	5			V	I _r =10μA
AXIAL INTENSITY	I _v	130		250	Lm	I _f =350mA
VIEWING ANGLE			130		2x theta	
EMITTED COLOR:	WHITE					
COLOR TEMPERATURE		4500	6300	10000	K	
EPOXY LENS FINISH:	CLEAR					

LIMITS OF SAFE OPERATION AT 25°C

PARAMETER	MAX	UNITS
PEAK FORWARD CURRENT*	1.0	A
STEADY CURRENT	700	mA
POWER DISSIPATION	7.5	W
DERATE FROM 25°C	-1.2	mW/°C
OPERATING, STORAGE TEMP.	-40 TO +80	°C

*T<10μS

CAUTION: MOISTURE SENSITIVE DEVICE
PER JEDEC LEVEL 3 STANDARDS

CAUTION: STATIC SENSITIVE DEVICE
FOLLOW PROPER E.S.D. HANDLING PROCEDURES
WHEN WORKING WITH THIS PART.



UNCONTROLLED DOCUMENT

*UNLESS OTHERWISE SPECIFIED TOLERANCES PER DECIMAL PRECISION ARE: X=±1 (±0.039), XX=±0.5 (±0.020), XXX=±0.25 (±0.010), XXXX=±0.127 (±0.005). LEAD SIZE=±0.05 (±0.002), LEAD LENGTH=±0.75 (±0.030). MIN.=^{+0.00}/_{-0.00} MAX.=^{+0.00}/_{-0.00}

REV.

PART NUMBER

SML-LX3939UWC-TR

10.10mm SQUARE 5 WATT HIGH POWER SMT LED,
WHITE LED, WATER CLEAR LENS.

CONFIDENTIAL INFORMATION

THE INFORMATION CONTAINED IN THIS DOCUMENT IS THE PROPERTY OF LUMEX INC. EXCEPT AS SPECIFICALLY AUTHORIZED IN WRITING BY LUMEX INC, THE HOLDER OF THIS DOCUMENT SHALL KEEP ALL INFORMATION CONTAINED HEREIN CONFIDENTIAL AND SHALL PROTECT SAME IN WHOLE OR IN PART FROM DISCLOSURE AND DISSEMINATION TO ALL THIRD PARTIES.

RELIABILITY NOTE

OUR MANY YEARS OF EXPERIENCE DATA ACCUMULATION INDICATE THAT SOLDER HEAT IS A MAJOR CAUSE OF EARLY AND FUTURE FAILURE. PLEASE PAY ATTENTION TO YOUR SOLDERING PROCESS.



DRAWN BY:

JN

CHECKED BY:

APPROVED BY:

DATE: 10.05.07

PAGE: 1 OF 2

SCALE: N/A